

GENERAL NOTES

FOR ADDITIONAL INFORMATION ON GUARD RAIL, SEE STANDARD PLANS FOR HIGHWAY GUARD RAIL (MASH).

ALL DIMENSIONS SHALL BE VERIFIED IN THE FIELD BY THE CONTRACTOR AND APPROVED BY THE PROJECT ENGINEER.

○ FOR CURB & TRANSITION INFORMATION, SEE STANDARD PLANS FOR HIGHWAY GUARD RAIL (MASH), SHEET 3 OF 11.

⊗ 2'-3" & 5" DIMENSIONS MAY VARY.

BARRIER RAIL REHABILITATION

ALL WORK AND MATERIALS REQUIRED TO RAISE THE EXISTING BARRIER RAIL TO THE REQUIRED HEIGHT OF 2'-8" SHALL BE PAID FOR UNDER: BARRIER RAIL REHABILITATION, PER LIN. FT.

GUARD RAIL ANCHOR BLOCKS

ALL WORK AND MATERIALS REQUIRED TO REMOVE EXISTING RAILING AND CONSTRUCT THE ANCHOR BLOCK SHALL BE PAID FOR UNDER: GUARD RAIL ANCHOR BLOCK, PER EACH, ITEM 704-09-00100

CONCRETE IN CROSS HATCHED AREA SHALL BE REMOVED. THE EXISTING REINFORCING STEEL SHALL REMAIN IN PLACE AND SHALL BE CLEANED AND STRAIGHTENED TO THE SATISFACTION OF THE PROJECT ENGINEER BEFORE POURING NEW CONCRETE.

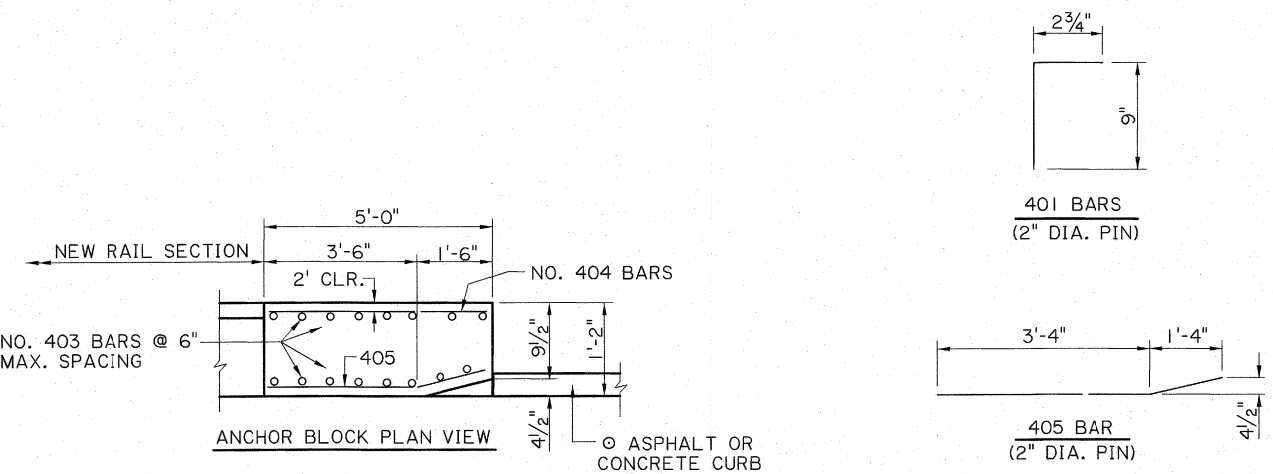
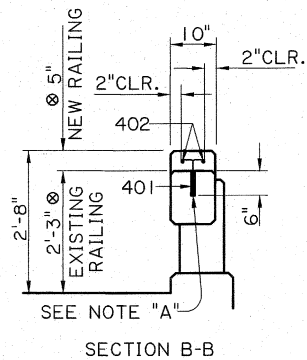
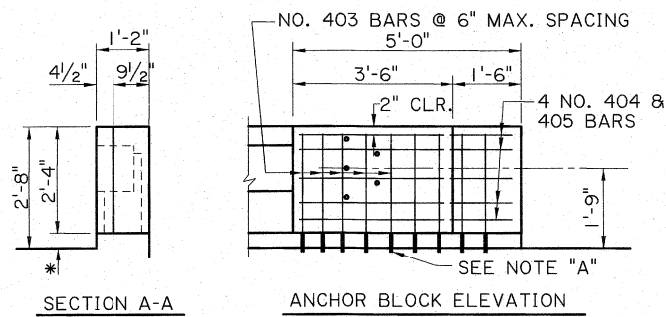
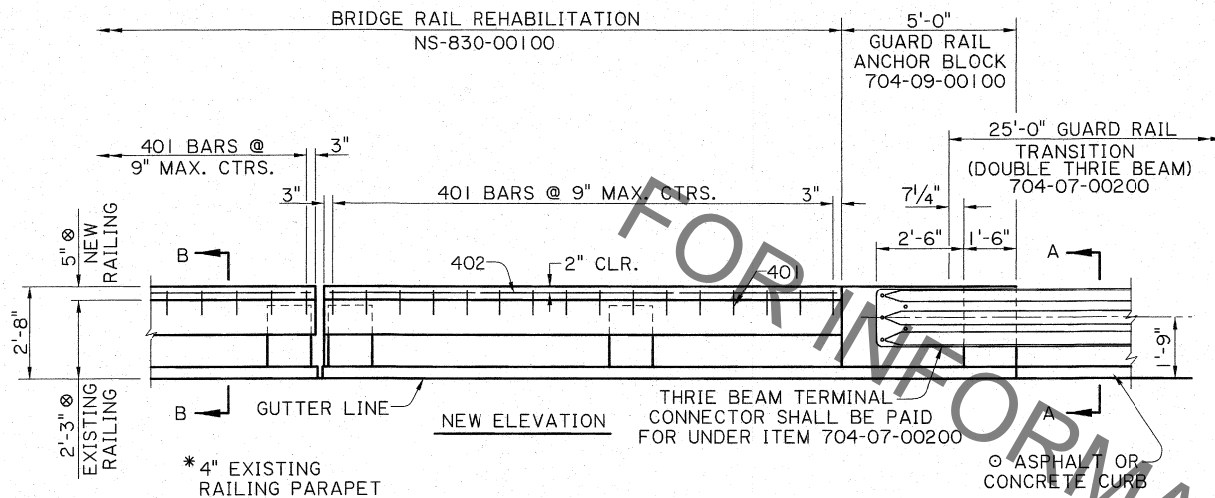
CONCRETE

NEW CONCRETE SHALL BE CLASS "A1".

NOTE "A"

NO. 401 & 403 BARS SET IN 3/4" Ø DRILLED HOLES. CLEAN HOLES WITH COMPRESSED AIR AND MAKE THEM FREE OF ANY OIL OR RESIDUE. FILL HOLES WITH A TYPE IV, GRADE 2 OR 3 EPOXY LISTED ON THE APPROVED MATERIALS LIST, PRODUCT CATEGORY "EPOXY RESIN SYSTEMS". PLACE BARS IN HOLES AND WAIT THE MANUFACTURER'S CURE TIME BEFORE POURING NEW CONCRETE.

THIS DETAIL WAS DEVELOPED AND APPROVED FOR USE UNDER NCHRP REPORT 350. AS PER LADOTD'S MASH IMPLEMENTATION POLICY, ITS CONTINUED USE IS ALLOWED WHILE A MASH ALTERNATIVE IS DEVELOPED OR EVALUATED.



FOR INFORMATIONAL PURPOSES ONLY

SHEET NUMBER		PARISH		CONTROL SECTION		STATE PROJECT	
DESIGN	CHECK	DETAIL	CHECK	REVIEW	SERIES		
P. FOSSIER	C. GAUDRY	J. DOUCET	P. FOSSIER	K. BRAUNER			

APPROVED BY CHIEF ENGINEER: *Christy P. Hoels*

DATE: 5/3/2022

STATE OF LOUISIANA
KIRT M. BRAINER
License No. 30567
PROFESSIONAL ENGINEER
IN
CIVIL ENGINEERING

STATE OF LOUISIANA
CONFIDENTIAL

ANCHOR BLOCK & BRIDGE RAIL REHABILITATION FOR LOW CONCRETE POST AND RAIL

BRIDGE AND STRUCTURAL DESIGN

DOTD
LOUISIANA DEPARTMENT OF TRANSPORTATION & DEVELOPMENT

GRR-03